



Classic Color Documentation.

Daihatsu

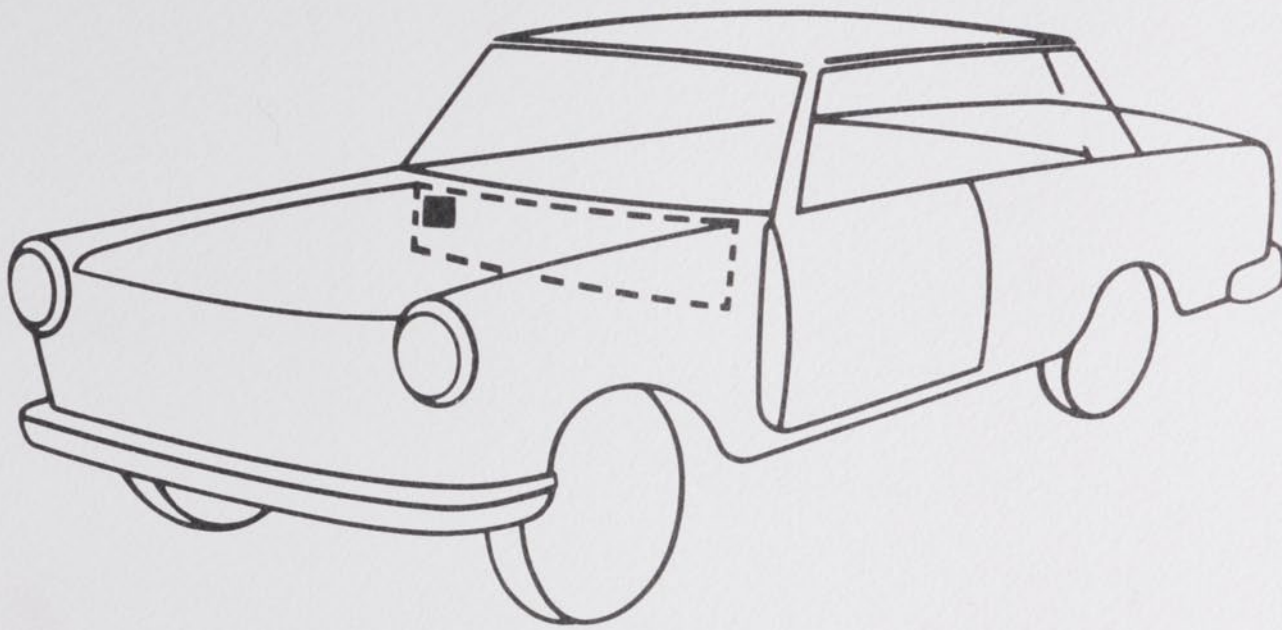


CLASSIC

COLOR PARTNER

Daihatsu

Werksfarbtonangabe



B07 blue (1984)



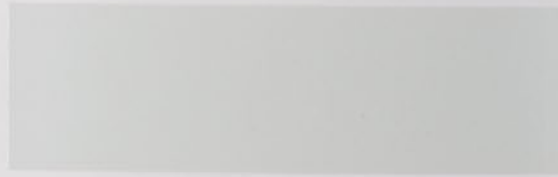
G05 green (1984)



T06 beige (1983)



038 white (1983)



3E7 red (1984)



031 white (1984)

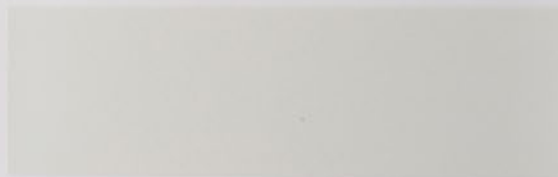


+ Zweischicht-Metallic-Lackierung

881 blue (1981)



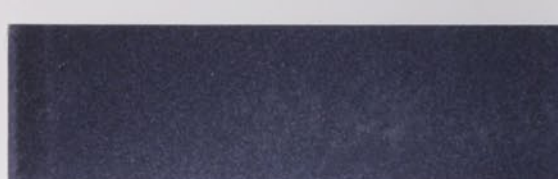
041 white (1985)



+ 451 septer silver (1984)



+ 8B4 dark blue (1984)



+ **B04 blue-met./R (1982)**
Nuancen: B04/BL - Blatt 7

+ **G04 light green-met. (1983)**

+ **R07 red-met. (1983)**

+ **R08 red-met. (1983)**

+ **362 flash orange-met. (1983)**

+ **476 samoa bronze-met. (1983)**

+ **8B5 dark blue-met. (1983)**

B05 light blue (1983)

T02 beige (1983)

4A3 brown (1983)

Zweischicht-Metallic-Lackierung
Für weitgehend effektgleiche Reparatur-
lackierungen steht das Standox Spezial-
Metallic-System zur Verfügung.

+



+ S01 silver-met. (1982)



+ T03 beige-met. (1982)



+ 6D3 green-met. (1982)



+ 867 summer blue-met.
(1982)



+ G02 dark green-met. (1982)



+ T04 brown-met. (1982)



+ Zweischicht-Metallic-Lackierung

+ 148 silver-met. (1983)



+ 132 silver met. (1980)



+ 880 blue-met. (1980)



+ 887 blue-met. (1980)



+ B01 light blue-met. (1981)



+ B03 blue-met. (1981)



+ R02 red-met. (1981)



+ Zweischicht-Metallic-Lackierung

+ R03 brown-met. (1981)



+ T01 beige-met. (1981)



+ B04 blue-met./BL (1982)



+ R05 red-met. (1982)



129 silver pearl-met. (1978)



695 green eccellente-met.
(1978)



696 majestic green-met. (1978)



840 aqua marine-met. (1978)



858 blue-met. (1978)



+ 125/GT silver-met. (1979)



+ Zweischicht-Metallic-Lackierung

+ 364 red-met. (1979)



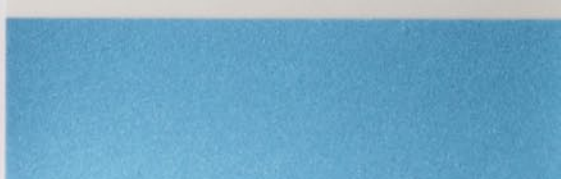
+ 385 maroon-met. (1979)



+ 423/ZZ bronzo-met. (1979)



+ 870/GL blue-met. (1979)



B02 silent blue (1981)



G01 tropical green (1981)



R01 red (1981)



R04 disco red (1981)



441 beach blue (1981)



6B4 green (1981)



543 slim yellow (1982)



6D6 meadow green (1982)



R06 red (1983)



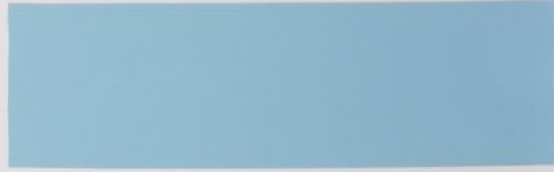
424 white blossom (1980)



449 coconut brown (1980)



450 light blue (1980)



453 september green (1980)



500 corn yellow (1980)



529 meadow green (1980)



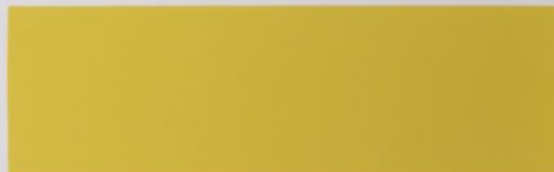
530 seaside blue (1980)



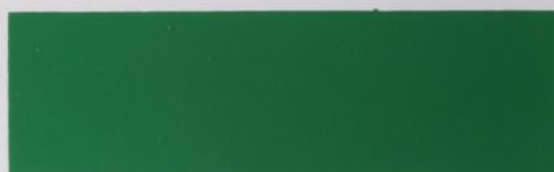
531 green (1980)



541 yellow (1980)



682 green (1980)



857/GJ blue (1978)



481 beige (1979)



543 creme (1979)



545/HH yellow (1979)



6 B 2/HJ green (1980)



033 white (1980)



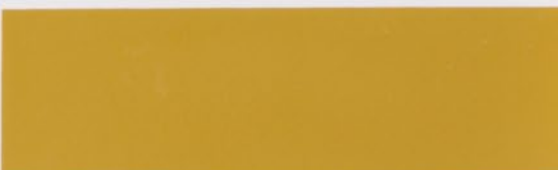
310 aromatic olive (1980)



374 volcano red (1980)



393 passion yellow (1980)



422 cheerful red (1980)



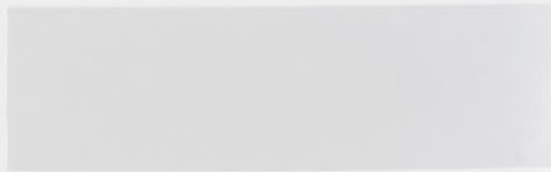
023 nova white (1978)



030/GS poppy white (1978)



254 palace white (1978)



301 rude yellow (1978)



336/FX camelia red (1978)



348 prairie green (1978)



349 airy mustard (1978)



355/GK maroon (1978)



532/FS yellow (1978)



672/CH aromatic olive (1978)





Standex GmbH · Postfach · D-42271 Wuppertal · Deutschland