

---

## Application of the Standoblue basecoat under very humid or damp conditions

Standoblue is a basecoat system that makes it possible to achieve brilliant colour accuracy. In order to optimise process safety in humid and damp conditions, Standox recommends the following tips to prevent the application of the basecoat layer from being too wet. A basecoat that is too wet can lead to colour deviations such as lower gloss levels, darker or coarser appearances or clouding in metallic colours because the aluminium-bronze pigments are unable to achieve optimal alignment. Harald Klöckner, Manager of Standox Training Management for the Europe, Middle East and Africa (EMEA) region, provides some tips for refinishing under humid or damp conditions.

### Tip 1: Pay attention to the surface structure

The proven application of Standoblue in a single process step is carried out using an even and uniform spray coat from a distance of approximately 20 to 25 centimetres followed by an effect spray coat onto the still-wet basecoat at an increased distance of 30 to 35 centimetres. If applied correctly to the wet coat, Standoblue exhibits a fine, even structure. If this is not the case, and if the basecoat looks smooth and very wet, this can negatively affect the end result. The fine structure tenses during the flash off phase to produce a smooth surface that provides the right base for the following clearcoat application.

### Tip 2: Carefully prepare the spray gun and the spray pressure

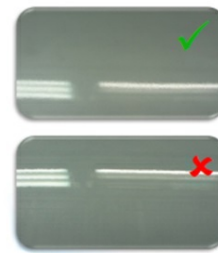
Select the correct spray gun and the recommended nozzle size. At high humidity levels, large nozzle sizes should not be used when applying the basecoat as this will make even application much harder. Be mindful of the spray pressure and adjust it to the level recommended in the technical datasheet. If the spray pressure is too low this can lead to a paint coat that is too wet. Standox recommends using a properly working air pressure gauge on the spray gun to obtain the right spray pressure. Defective or damaged air pressure gauges should be replaced immediately.

### Tip 3: The right adjustment is key

By adding the Standoblue Viscosity Adjuster and the Standoblue Viscosity Adjuster long, the Standoblue basecoat can be adapted to local climatic conditions. Consult the Standox climate guide, available from Standox representatives, to double check. Measure the current relative humidity and temperature in the spray booth with a hygrometer. Transfer the measurements to the Standoblue climate guide to find the corresponding recommended product adjustment. If humidity levels are very high, the Standoblue Viscosity Adjuster long should not be used. In addition to the other potential defects, a coat that is too wet can result in unwanted paint build-up on edges and in corners.

### Tip 4: The option for humidity levels over 65%

If relative humidity in the spray booth is above 65 per cent, spray the first coat as usual and allow for a two-minute flash off time before applying the effect coat. In order to increase process safety and improve colour stability under these conditions, refinishers can also add 30 per cent Standoblue Viscosity Adjuster for Standoblue effect and metallic colours.



*Practical tips from Standox on the application of the Standoblue basecoat under very humid or damp conditions*

[More about Standoblue](#)