



**Classic Color Documentation.**

**Saab**



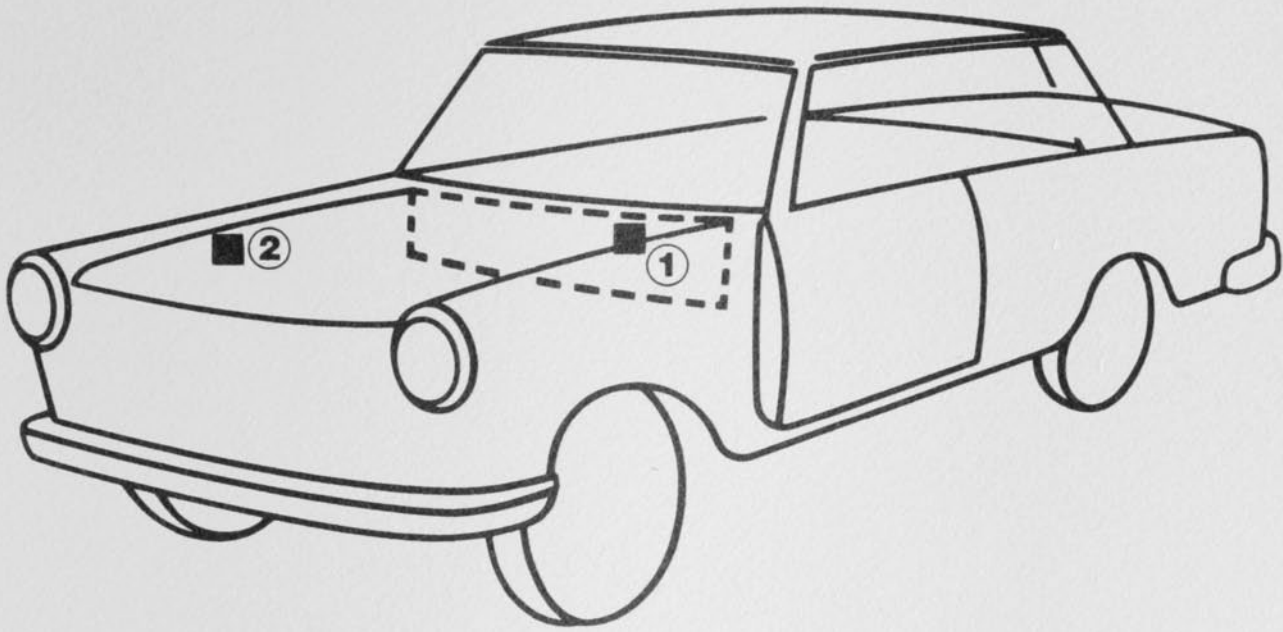
**CLASSIC**  

---

**COLOR PARTNER**

# SAAB

## Werksfarbtonangabe



① Saab 96  
99 (bis 1979)

② Saab 900  
99 (ab1980)

116 azurblå (1983)

153 cirrusvit/GE (1983)

Nuancen: /H - 1980 - Blatt 8

157 cirkonbla (1985)

162 dolomitorsand (1985)

+ Zweischicht-Metallic-Lackierung

+ 117 platina bla (1983)

+ 120 cochenille roed (1984)

+ 129 rosenkvarts (1984)

+ 156 paerlemoer (1984)

+ 158 odoardogra (1985)

+ 159 malakit ljus (1985)



+ 189 rödguld-met. (1981)



+ 113 mörk amarant-met. (1982)



155 elfenben (1982)



165 doradobrun/D (1982)  
BK 2



185 gyllengul (1982)



148 accasiagroen-met./H  
(1979)



+ 146 cypressgroen-met. (1978)



+ Zweischicht-Metallic-Lackierung

139 indigoblå-met. (1980)



149 pinjegrön-met. (1980)



+ 172 silver-met. (1980)



+ 125 rubinröd-met. (1980)



+ 130 indigoblå-met. (1980)



+ 140 pinjegrön-met. (1980)



+ 169 valnötsbrun-met. (1980)



+ 112 skifferblå-met. (1981)



124 karminröd-met./BL (1981)



+ 144 mosel grön-met. (1981)



+ Zweischicht-Metallic-Lackierung

YR 2 sepia-met. (1972)



YR 4 corall-met. (1972)



YR 5 sepiakristall-met. (1974)



SK 1 silverkristall-met. (1975)



123/ cardinalröd-met. (1976)  
(R 6)



SK 2 anthracitgrå-met. (1976)



SK 3 silverkristall-met. (1976)



137 aquamarinblå-met. (1978)



148 accasiagrön-met./D (1978)



124 karminröd-met. (1979)



136 midnattsblå (1978)



152 marmorvit (1978)



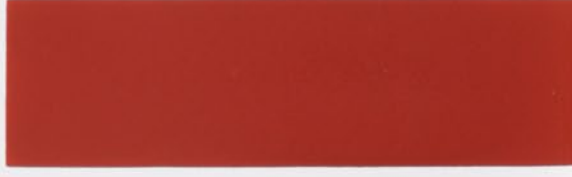
167 chamottebrun (1978)



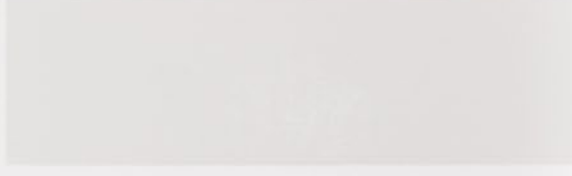
187 alabastergul (1978)



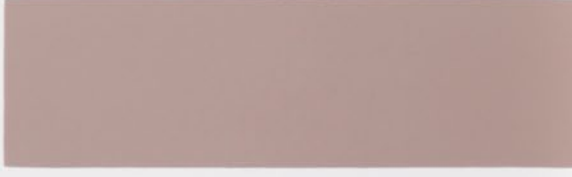
126 terracottaröd (1980)



153 cirrusvit/H (1980)



161 came (1980)



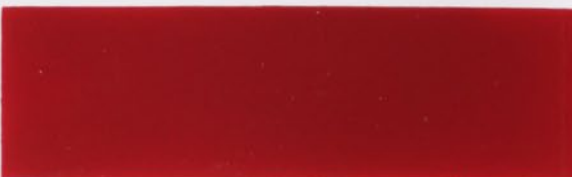
131 admiralblå (1981)



168 kastanjebrun (1981)



127 cherryröd (1982)



GN 10 smaragdgrön (1974)



121 cinnoberröd (1974)  
R 4



W 2 orchidévit (1974)



GN 11 opalgrön (1975)



Y12 topazgul (1975)



B 9 coelinblå (1976)



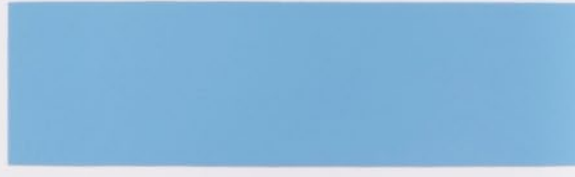
165 doradobrun/H (1976)  
BK 2



YR 6 antilopbrun (1976)



B 10 lagunblå (1977)



GN 12 jadegrön (1977)





RB 1 silvermink (1970)



Y 6 savannbeige (1970)



GN 8 veronagrön (1971)



RB 2 burgundröd (1971)



Y 8 ambragul (1971)



B 8 karolinerblå (1972)



Y 9 brillantgul (1972)



GN 9 veronagrön (1973)



R 3 siennabrun (1973)



Y 11 indisk gul (1973)



GY 4 malmgrå (1965)



Y 4 gul (1965)



B 4 midnattsblå (1966)



B 6 husarblå (1967)



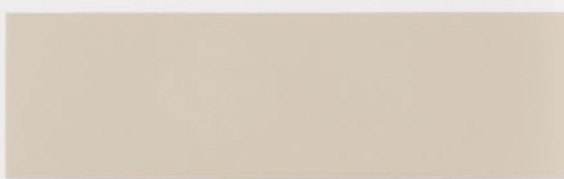
GY 3 mörkgrå (1967)



R 2 toreadorröd/L (1967)



Y 5 silversand (1967)



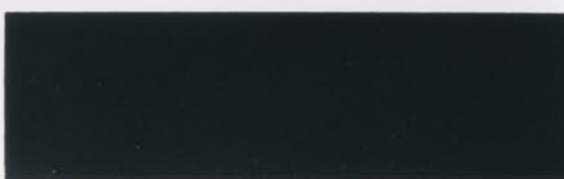
B 7 mellanblå (1969)



GN 6 sjögrön (1969)



GN 7 tyrolergrön (1970)



GY 2 citygrå (1958)



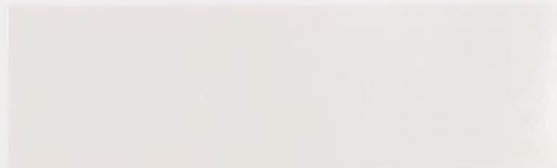
Y 1 beige (1958)



Y 2 safaribrun (1958)



W 1 polarvit (1961)



GN 4 grön (1962)



B 2 ishavsblå (1963)



B 5 glaciärblå (1963)



Y 3 savannbrun (1963)



GN 5 olivgrön (1964)



B 3 ljusblå (1965)





Standex GmbH · Postfach · D-42271 Wuppertal · Deutschland