



**Classic Color Documentation.**

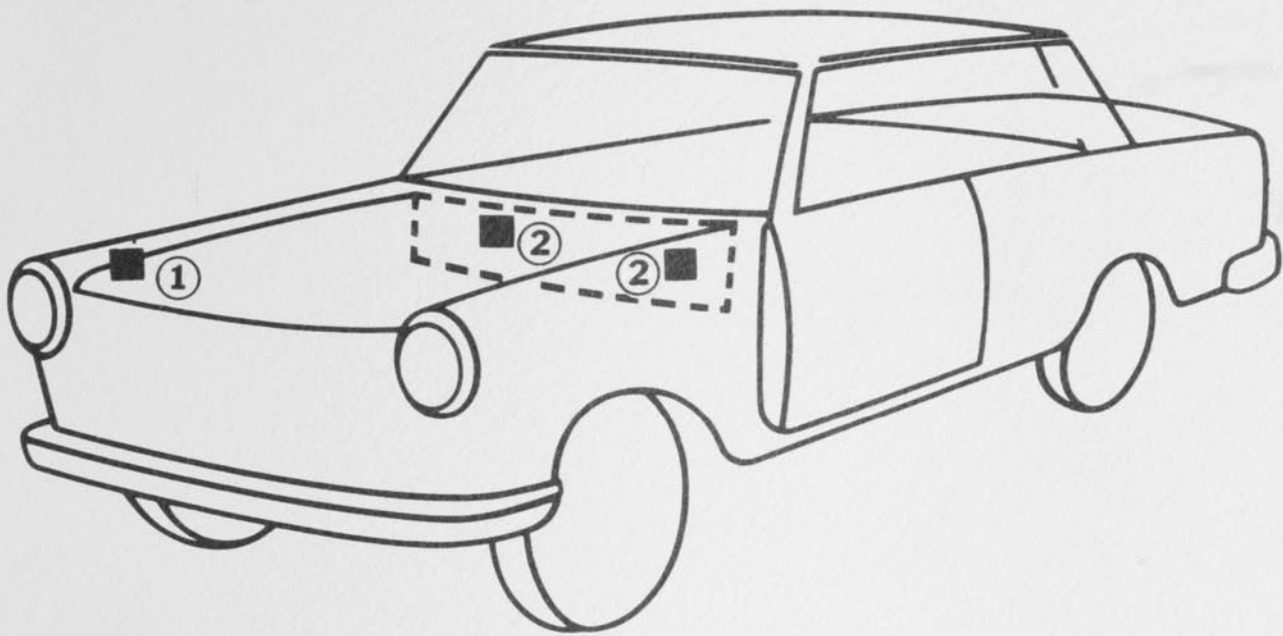
**Toyota**



**CLASSIC**  
**COLOR PARTNER**

# Toyota

## Werksfarbtonangabe



① Typ 1000 (Kombi)  
(Estate)  
(Break)

② Typ Celica  
Corolla  
Corona  
Cressida

+ 4G9 beige (1985)



+ 4H1 medium brown (1985)



+ 6G3 mint green/GR (1985)  
Nuancen:/GE - 1982 - Blatt 25



+ 6J5 light green (1987)



+ 8D7 blue (1987)



+ 8E1 medium blue (1985)



+ 8E3 dark blue (1987)  
Mica



+ 896 blue/GR (1986)  
Nuancen:/BL - 1983 - Blatt 31



+ 920 amethyst silver (1985)



+ Zweischicht-Metallic-Lackierung



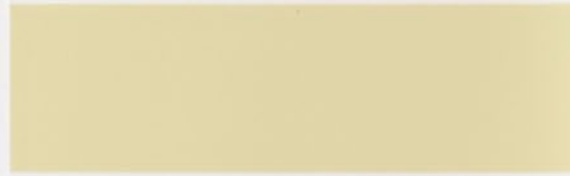
6H6 green (1985)



8D9 blue (1985)



9A8 cream (1985)



+ 166 super silver (1987)



Zweischicht-Metallic-Lackierung

+ 167 grey (1987)



+ 3A1 red/R (1985)  
Nuancen:/GE - 1980 - Blatt 20



+

+ 3H1 red (1985)  
Mica



+ 3H2 maroon (1985)



+ 3H3 dark red (1987)



+ 369 white red (1987)



+ 3G7 red (1985)



+ 4A7 brown (1985)



+ 4C7 copper/H (1985)  
Nuancen: /D - 1983 - Blatt 29



+ 4D2 beige/H (1985)  
Nuancen: /D - 1983 - Blatt 29  
/R - 1985 - Blatt 38



+ 4D2 beige/R (1985)  
Nuancen: /H - 1985 - Blatt 38  
/D - 1983 - Blatt 29



+ 4E1 light topaz/GE (1985)  
Nuancen: /GR - 1983 - Blatt 30  
/R - 1984



Zweischicht-Metallic-Lackierung

+ 4E2 brown (1986)



+ 4G3 brown (1986)



+ 8B5 blue (1985)



+ 8C5 bright blue (1985)



**038 white/H (1985)**  
Nuancen: /D - 1982 - Blatt 26

**6H3 pale green (1986)**

**8B2 blue (1986)**

+ **154 greenish silver (1985)**

+ **156 dark grey (1985)**

+ **157 medium (1986)**

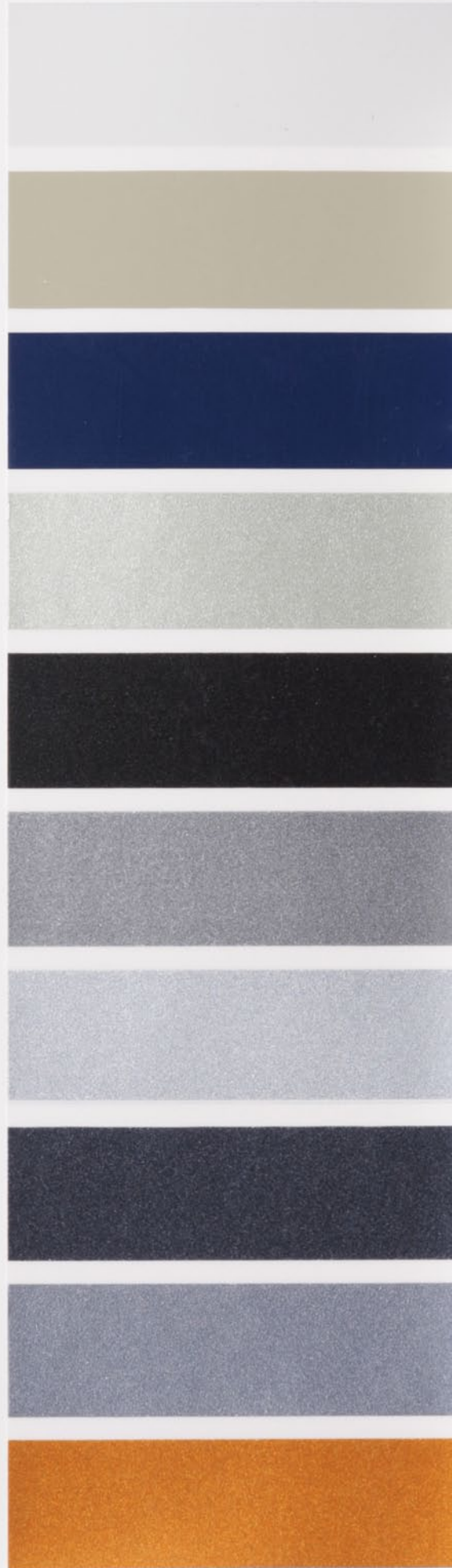
+ **160 bluish silver (1986)**

+ **162 dark grey (1985)**

+ **163 bluish grey (1986)**

+ **3D8 orange (1985)**

+ Zweischicht-Metallic-Lackierung





+ 159 grey (1985)



+ 4G5 brown (1985)



+ 6H7 green (1984)



+ 6J4 light green (1985)



+ 8B8 sky blue (1984)



+ 8C7 light blue (1985)



+ 8D4 blue (1985)



+ 869 blue (1984)



+ 897 light aqua blue (1984)



+ 204 black (1985)



+ Zweischicht-Metallic-Lackierung

3F3 red (1984)



3F4 red (1984)



370 claret red (1983)



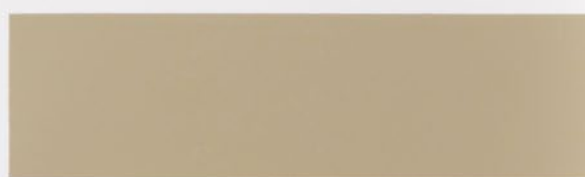
4C6 ivory (1983)



4E7 ivory (1984)



4E9 beige (1984)



561 yellow (1984)



6B5 green (1983)



6H9 greyish olive (1984)



8B7 storong blue (1984)





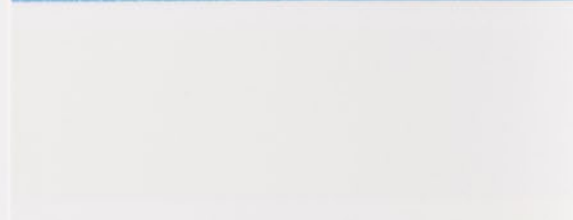
+ 8C4 blue-met. (1984)



+ 8C5 bright blue-met. (1984)



040 super white II (1984)



041 new white (1984)



3E5 super red II (1984)



3E6 red (1984)



3E8 deep maroon (1984)



3E9 dark red (1984)



3F1 dark red (1984)



3F2 super deep red (1984)



+ Zweischicht-Metallic-Lackierung

+ 6G9 light green-met. (1983)



+ 720 dark turquoise-met.  
(1983)



+ 8B3 light blue-met. (1983)



+ 8B4 night blue-met. (1983)



+ Zweischicht-Metallic-Lackierung

+ 155 dark grey-met. (1984)



+ 4E5 greyish brown-met. (1984)



+ 4E6 beige-met. (1984)



+ 4E8 beige-met. (1984)



+ 6D3 deep green-met. (1984)



+ 6H8 green-met. (1984)



+ 150 silver-met. (1983)

+ 3A4 deep plum-met. (1983)

+ 3D9 wine-met. (1983)

+ 3E2 wine red-met. (1983)

+ 3E3 lone pink-met. (1983)

+ 3E4 red-met. (1983)

+ 4C5 brown-met. (1983)

+ 4D3 camel beige-met. (1983)

+ 4E3 light beige-met. (1983)

+ 6E5 green-met. (1983)

+ Zweischicht-Metallic-Lackierung





8A1 blue (1983)



3D7 red (1983)



560 light yellow (1983)



8B1 deep blue (1983)



+ Zweischicht-Metallic-Lackierung

+ 8A9 blue-met. (1983)



+ 884 dark blue-met. (1983)



+ 889 light blue-met./GR (1983)



+ 894 blue-met. (1983)



+ 896 blue-met. (1983)



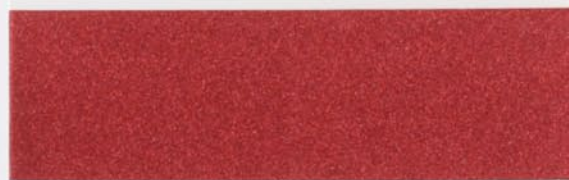
+ 899 blue-met. (1983)



+ 3D4 rose beige-met. (1983)



+ 3D5 red-met. (1983)



+ 3D6 burn red-met. (1983)



+ 4B6 rose-met./GR (1983)



+ 4D5 brown-met. (1983)



+ 4E1 light-topaz-met./GR (1983)



+ Zweischicht-Metallic-Lackierung

+ 6G5 green-met. (1983)



+ 6H1 light green met. (1983)



+ 8A4 dark blue-met. (1983)



+ 8A8 blue-met. (1983)



+ 3C6 apricot-met. (1983)



+ 3C7 rose grey-met. (1983)



+ 3C8 wine red-met. (1983)



+ 4B7 light brown-met. (1983)



+ 4C4 dark brown-met. (1983)



+ 4C7 copper-met./D (1983)



+ 4D2 beige-met./D (1983)



+ 494 beige-met. (1983)



+ 6G1 dark green-met. (1983)



+ 145 ash grey-met. (1982)



+ Zweischicht-Metallic-Lackierung



+ Zweischicht-Metallic-Lackierung

+ 3C6 apricot-met. (1983)



+ 3C7 rose grey-met. (1983)



+ 3C8 wine red-met. (1983)



+ 4B7 light brown-met. (1983)



+ 4C4 dark brown-met. (1983)



+ 4C7 copper-met./D (1983)



+ 4D2 beige-met./D (1983)



+ 494 beige-met. (1983)



+ 6G1 dark green-met. (1983)



+ 145 ash grey-met. (1982)



+ 6E1 lime gold-met. (1982)



+ 6E9 mint green-met. (1982)



+ 6G3 mint green-met. (1982)



721 turquoise-met. (1982)



892 light blue-met. (1982)



+ 148 silver-met. (1983)



+ Zweischicht-Metallic-Lackierung

+ 3A5 deep red-met. (1983)



+ 3B5 red-met. (1983)



+ 3C2 mahogany-met. (1983)



+ 3C5 coral-met. (1983)



+ 147 silver-met. (1982)



+ 3B4 apricot-met. (1982)



+ 3C3 shell pink-met. (1982)



+ 4B5 brown-met. (1982)



+ 4B6 rose-met./GE (1982)



+ 4C1 brown-met. (1982)



+ Zweischicht-Metallic-Lackierung

+ 4C3 light brown-met. (1982)



+ 4C8 orange-met. (1982)



474 copper-met./D (1982)



+ 6D1 dark green-met. (1982)





143 grey-met. (1982)



3A8 rose-met. (1982)



3A9 russet-met. (1982)



+ 3B1 dark red-met. (1982)



+ 379 marron-met. (1982)



+ 4A9 cinnamon-met. (1982)



4B4 brown-met. (1982)



+ 473 copper-met. (1979)



484 orange-met./D (1981)



861 light blue-met./BL (1981)



+ Zweischicht-Metallic-Lackierung

4A4 beige-met. (1980)



+ 4A5 beige-met. (1980)



+ 4A6 beige-met. (1980)



879 dark blue-met. (1980)



888 light blue-met. (1980)



+ 889 light blue-met./BL (1980)



+ Zweischicht-Metallic-Lackierung

+ 138 grey-met. (1982)



+ 140 charcoal-met. (1982)



+ 141 haze grey-met. (1982)



142 haze grey-met. (1982)





+ 879 dark blue-met. (1979)



+ 139 silver-met. (1980)



+ 3A1 red-met. (1980)



+ 377 maroon-met. (1980)



+ 387 maroon-met. (1980)



+ 390 maroon-met. (1980)



+ Zweischicht-Metallic-Lackierung

394 orange-met. (1980)



395 red-met. (1980)



396 maroon-met. (1980)



+ 398 orange-met. (1980)





6C3 brillant green-met. (1978)



137 silver-met. (1979)



+ 367 red-met. (1979)



+ 381 orange-met. (1979)



+ 473 copper-met. (1979)



+ 490 dark brown-met. (1979)



+ Zweischicht-Metallic-Lackierung

+ 6A5 black-met. (1979)



+ 865 blue-met. (1979)



+ 125 silver-met. (1978)



372 red-met. (1978)



6G2 pastel geen (1982)



6G4 light green (1982)



6H2 yellow green (1982)



8A2 blue (1982)



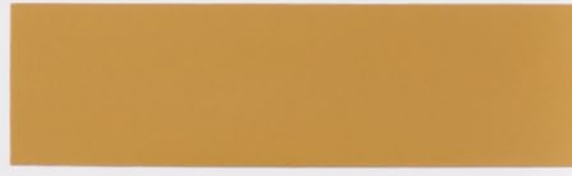
886 seaside blue (1982)



3D1 super red (1983)



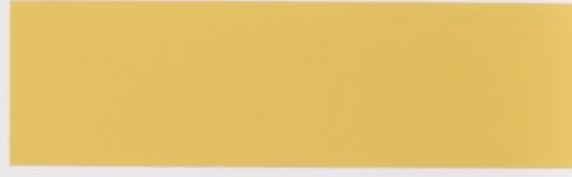
4C9 cinnamon (1983)



4D1 shell (1983)



558 yellow (1983)



6G8 dark green (1983)



035 super white (1982)



3A7 terracotta (1982)



3B2 wine (1982)



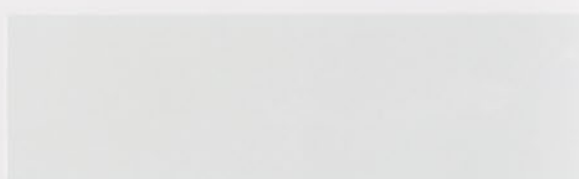
4A8 beige (1982)



6E8 green (1982)



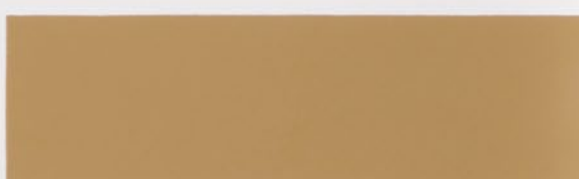
038 white/D (1982)



4C2 brown (1982)



497 beige (1982)



539 orange (1982)



557 cream (1982)





380 red (1979)



384 red (1979)



6C8 green (1979)



881 blue (1979)



877 dark blue (1979)



882 blue (1979)



487 brown (1979)



489 beige (1979)



391 red (1980)



496 beige (1980)



1986

6A1 yellow green (1977)



6A9 light olive (1977)



6B5 green (1977)



6B5 green (1977)



373 red (1978)



546 yellow (1978)



6B4/6C5 pure green (1978)



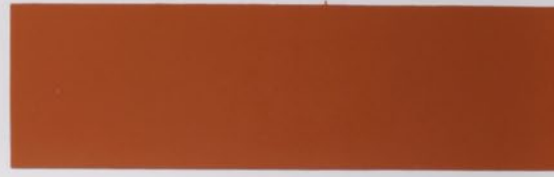
033 white (1979)



135 tope grey (1979)



375 orange (1979)



030 white (1977)



031 white (1977)



350 deep red (1977)



538 yellow (1977)



681 piräus green (1977)



866 blue (1977)



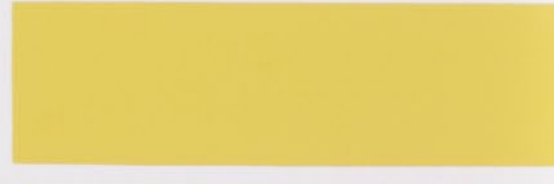
358 orange (1977)



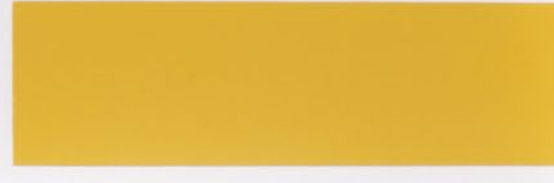
480 brown (1977)



541 yellow (1977)



542 yellow (1977)





346 red (1975)



463 brown (1975)



464 beige (1975)



532 yellow (1975)



857 medium blue (1975)



352 orange (1976)



440 brown (1976)



528 yellow (1976)



534 pure yellow (1976)



842 blue (1976)



1986

309 red (1974)



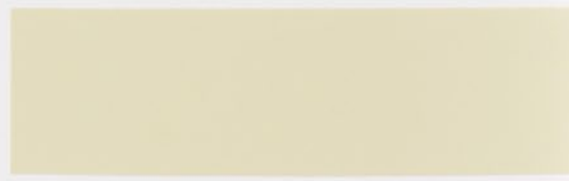
342 maron (1974)



345 red (1974)



504 yellow hazy moon (1974)



531 yellow (1974)



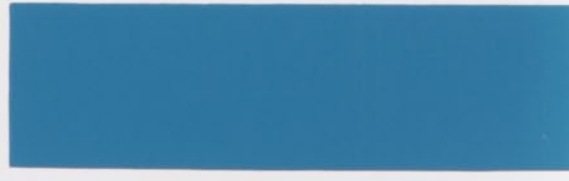
637 olive green (1974)



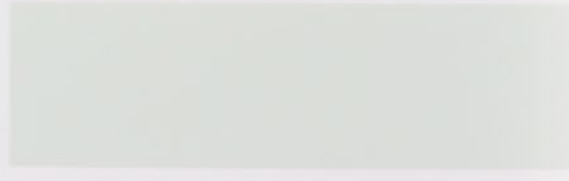
822 blue (1974)



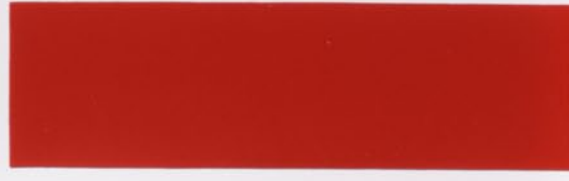
854 blue (1974)



023 white (1975)



336 red (1975)



1528 green fluor (1971)



1748 gloaming cream (1971)



512 monza olive (1972)



423 brown (1973)



521 greenish yellow (1973)



522 yellow (1973)



819 turquoise (1973)



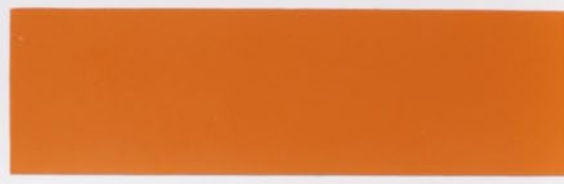
829 dark blue (1973)



027 white lunar (1974)



304 pollux orange (1974)





1747 perseus green (1970)



1749 blue gleam (1970)



1750 sun tan yellow (1970)



308 brillant persimmon (1971)



452 dyna blue (1971)



501/1556 yellow topas (1971)



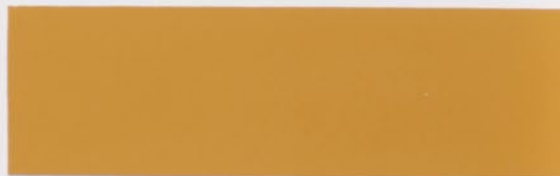
507 twilight yellow (1971)



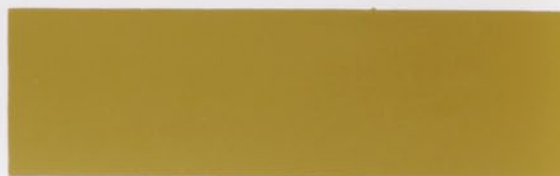
509/1746 yellow firefly (1971)



510 plateau yellow (1971)



511 mustard yellow (1971)



804 cobalt firmament (1970)



1435 todi cream (1970)



1507 helios red (1970)



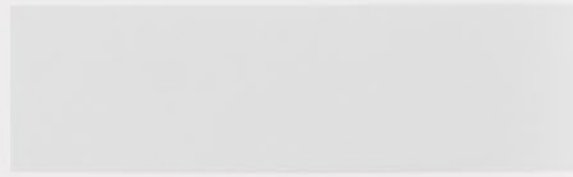
1508 tantalus green (1970)



1524/508 cream opal (1970)



1551/009 white moonstone  
(1970)



1553 red garnet (1970)



1618 dione blue (1970)



1671 ronda blue (1970)



503/1709 jutland yellow (1970)



1391 sirius white (1969)



1427/004 usse white (1969)



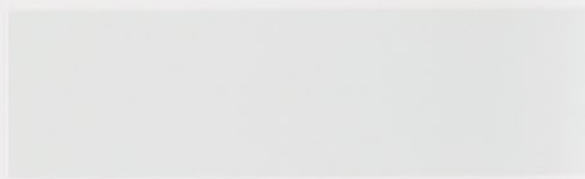
1437 sevilla blue (1969)



1502 selene yellow (1969)



1506/001 weiß (1969)



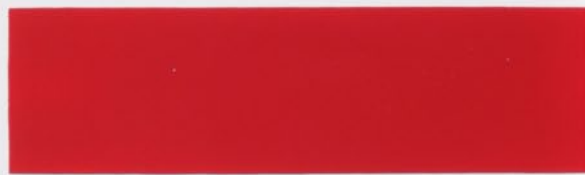
007/1564 egret white (1970)



301/1708 red (1970)



307/1744 uran red (1970)



453 judson green (1970)



803/1710 scandinavian sky  
(1970)



1986



335 carnival red (1965)



431 river blue (1965)



1208 horizontal blue (1965)



403 lily white (1966)



1396 caspian blue (1967)



1346 aphrodite white (1968)



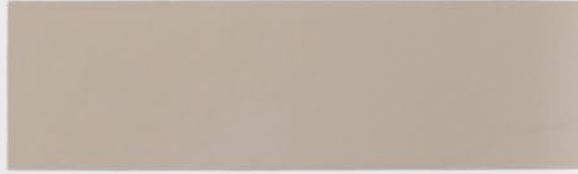
1353 neptun turquoise (1968)



1297 solar red (1969)



1352/401 pluto beige (1969)



1354 junio grey (1969)



427 brown-met. (1976)



130 silver-met. (1977)



343 maroon-met. (1977)



348 maroon-met. (1977)



473 copper-met. (1977)



474 copper-met./H (1977)



861 light blue-met./H (1977)



484 orange-met./H (1978)



6A8 black-met. (1978)



6B8 mint green-met. (1978)



908 purple-met. (1973)



119 silver-met. (1974)



128 silver-met. (1974)



338 copper-met. (1974)



455 brown-met. (1974)



679 light green-met. (1974)



682 deep green-met. (1974)



684 green-met. (1974)



707 turquoise-met. (1974)



337 orange-met. (1975)





1655/702 polynesia blue-met.  
(1971)



1661 dulnain green-met.  
(1971)



112 silver-met. (1972)



115 silver-met. (1972)



628 gold-met. (1972)



629 green-met. (1972)



660 green-met. (1972)



520 gold-met. (1973)



652 gold-met. (1973)



830 blue-met. (1973)



1388 beige-met. (1970)



1520 golden pearl-met. (1970)



1552 silver platina-met. (1970)



404 phosphor gold-met. (1971)



601 green altair-met. (1971)



602 green current-met. (1971)



604 blue bronze-met. (1971)



701 orion turquoise-met.  
(1971)



802 light blue-met. (1971)



805 blue-met. (1971)





Standex GmbH · Postfach · D-42271 Wuppertal · Deutschland